



'66 Shelby Mustang GT350H

Black-and-Gold....Lookin' Bold...This sleek Mustang GT-350 has become a legendary muscle car due to its unique heritage as part of a fascinating fleet of high-performance "rent-a-rides". In 1965, Peyton Cramer of Shelby American, Inc. decided to approach the Hertz car rental company with the concept of renting high-performance GT-350's to their customers. Research indicated that Hertz had manufactured their own cars in the late twenties, and they were painted Black-and-Gold. Hertz had just established the "Hertz Sports Car Club", and the Shelby proposal was received most enthusiastically, and 1,000 special 1966 GT-350's were ordered.

Twenty years ago, a driver's license that proved you were 25 years old, your Hertz Sports Car Club card, and seventeen dollars put you in the driver's seat, and the folks at Shelby-

America made sure that you would enjoy the ride of your life. The earliest GT-350's were primarily 1965 model cars equipped with four-speed transmissions, override traction bars, and the unique Hertz paint scheme. A special master cylinder was fitted to reduce pedal pressure, and the speedometer was fitted with cables that could not be disconnected easily. These were brazenly fast machines for anyone accustomed to the typical rental car, and tales persist to this day of motors being temporarily removed from a rented GT-350 to power a racing GT-350.



*** REPEAT SEVERAL TIMES**
* A REPETER PLUSIEURS FOIS



*** OPTIONAL PARTS**
* PIECES EN OPTION



*** DECAL**
* DECAL COMANIE



*** ALTERNATIVE ASSEMBLY**
* ENSEMBLAGE ALTERNATIVE



*** CEMENT TOGETHER**
* A COLLER



*** REMOVE AND THROW AWAY**
* A RETIRER ET JETER



*** DO NOT CEMENT**
* NE PAS COLLER

READ THIS BEFORE YOU BEGIN

- * Study the assembly drawings.
- * Each plastic part is identified by a number.
- * In the assembly drawings, some parts will be marked by a star (★) to indicate chrome plated plastic.
- * For better paint and decal adhesion, wash the plastic parts in a mild detergent solution. Rinse and let air dry.
- * Check the fit of each piece before cementing in place.
- * Use only cement for polystyrene plastic.
- * Scrape plating and paint from areas to be cemented.
- * Allow paint to dry thoroughly before handling parts.
- * Any unused parts may be discarded.

DECAL APPLICATION INSTRUCTIONS

1. Cut desired decal from sheet.
2. Dip decal in water for a few seconds.
3. Place wet decal on paper towel.
4. Wait until decal is movable on paper backing.
5. Place decal in position on model, face up and slide backing away.
6. Press out air bubbles with a soft damp cloth.
7. Milkiness that may appear is for better decal adhesion and will dry clear. Wipe away any excess adhesive.
8. Do not touch decal until fully dry.
9. Allow the decals 48 hours to dry before applying clear coat.

NOTE: Decals are compatible with setting solutions or solvents.

LIRE CE QUI SUIV AVANT DE COMMENCER

- * Etudier les schémas de montage.
- * Chaque pièce en plastique est identifiée par un numéro.
- * Sur les schémas de montage, certaines pièces sont marquées d'une étoile (★) pour indiquer qu'elles sont en plastique chromé.
- * Pour une meilleure prise de la peinture et des autocollants, laver les pièces en plastique avec une solution détergente peu concentrée. Les rincer et les laisser sécher à l'air.
- * Vérifier que chaque pièce s'ajuste bien avant de la coller en place.
- * N'utiliser que de la colle pour polystyrène.
- * Gratter les parties à coller pour enlever le chrome et la peinture.
- * Laisser la peinture bien sécher avant de manipuler les pièces.
- * Toute pièce inutilisée peut être jetée.

DIRECTIVES D'APPLICATION DES AUTOCOLLANTS

1. Découper l'autocollant désiré de la feuille.
2. Tremper l'autocollant dans de l'eau pendant quelques secondes.
3. Placer l'autocollant mouillé sur une serviette en papier.
4. Attendre que l'autocollant puisse être déplacé sur son support en papier.
5. Mettre l'autocollant en position sur le modèle face sur le dessus et faire glisser le support pour l'enlever.
6. Appuyer avec un chiffon doux humide pour éliminer les bulles d'air.
7. La substance laiteuse qui peut apparaître est destinée à améliorer l'adhésion de l'autocollant et devient incolore au séchage. Essuyer pour enlever tout excédent d'adhésif.
8. Ne pas toucher l'autocollant tant qu'il n'est pas bien sec.
9. Laisser l'autocollant sécher pendant 48 heures avant d'appliquer une couche transparente.

REMARQUE: Les autocollants sont compatibles avec les solutions de fixation ou les solvants.

This optional paint guide is provided if you choose to detail paint your model.

Ce guide de peintures vous sera fourni si vous choisissez de peindre votre modèle en détail.

Aluminum	Aluminium
Flat Black	Noir mat
Gloss Black	Noir brillant
Gloss Red	Rouge brillant
Engine Blue	Bleu engine
Semigloss Black	Noir satiné
Satin White	Blanc satiné
Silver	Argent
Steel	Acier
Transparent Red	Rouge transparent
Turn Signal Amber	Feu clignotant de direction ambre
Tan	Havane

If you have any questions or comments, call our hotline at: **(800) 833-3570** or, please write to:

Revell-Monogram Consumer Service Department, 725 Landwher Road, Northbrook, Illinois 60062

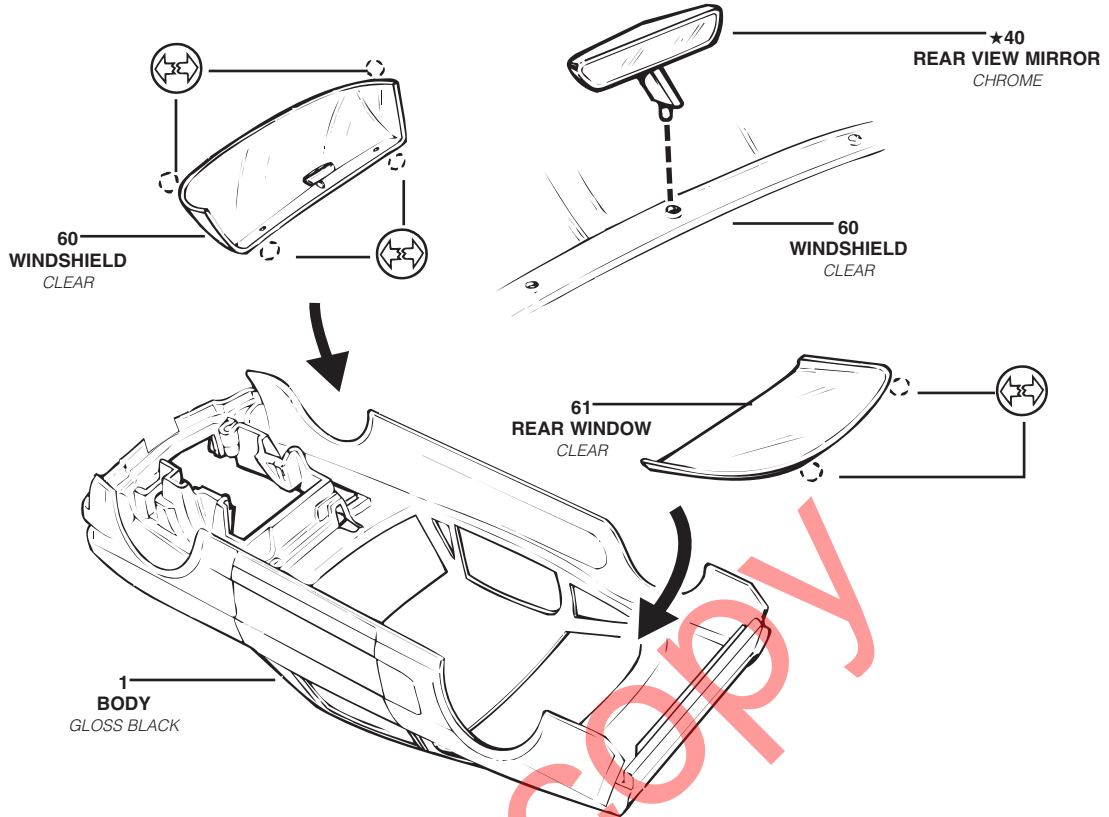
Be sure to include the plan number (85248200200), part number, description, your return address and phone number.

Visit our website: www.revellmonogram.com

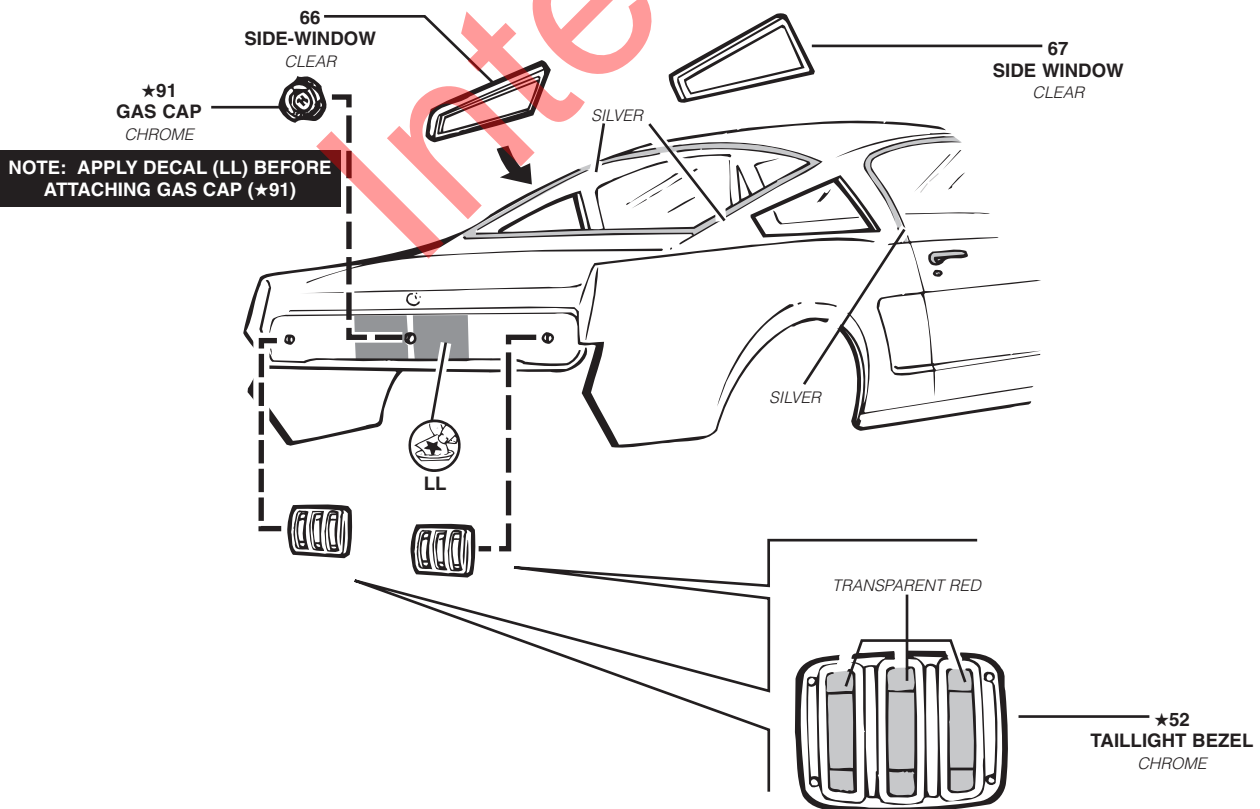
1

BODY ASSEMBLY

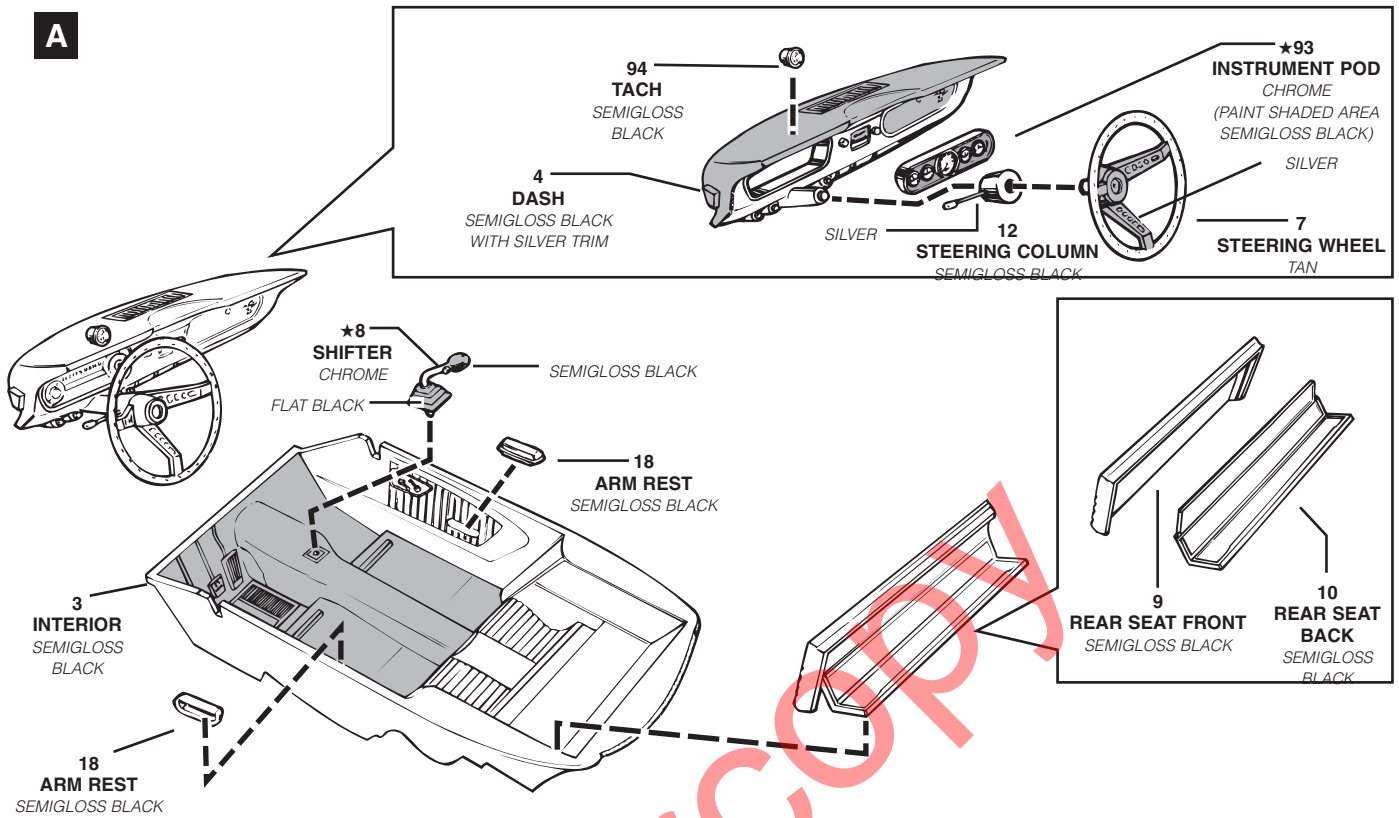
A



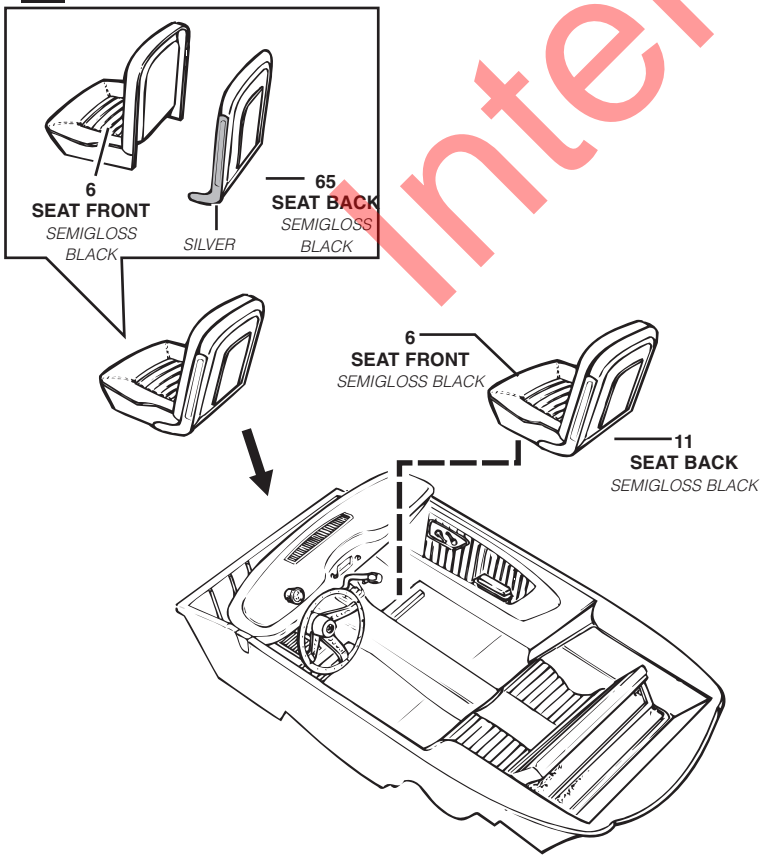
B



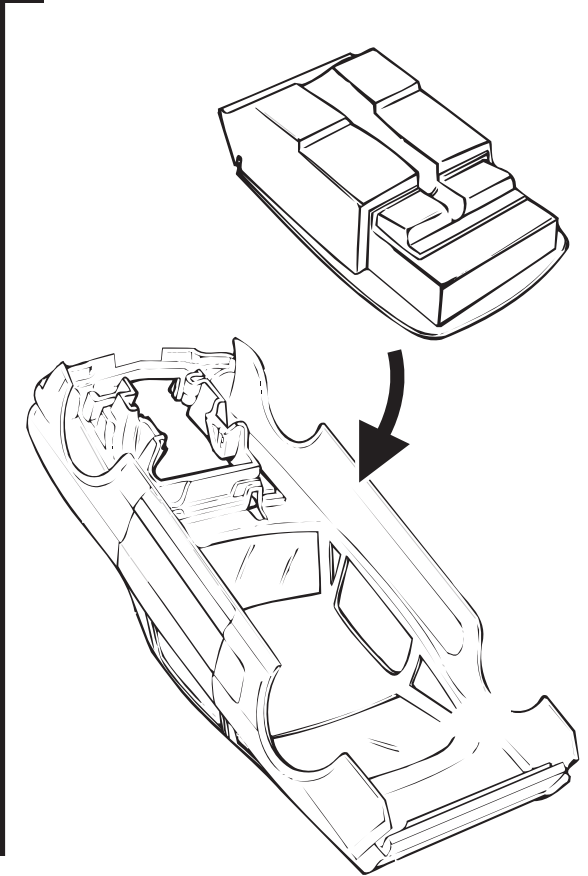
A



B

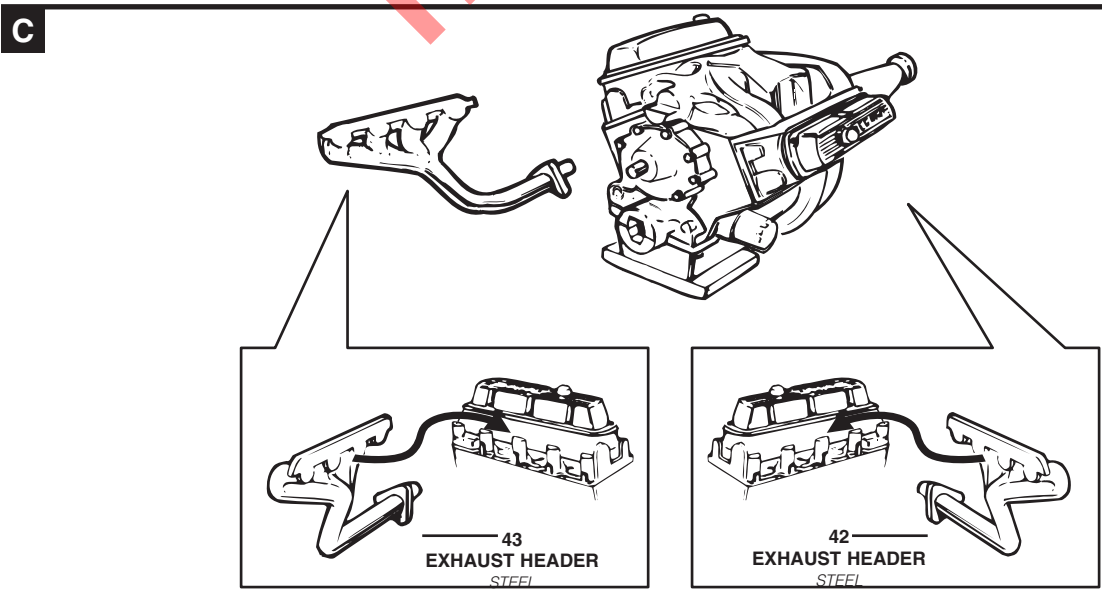
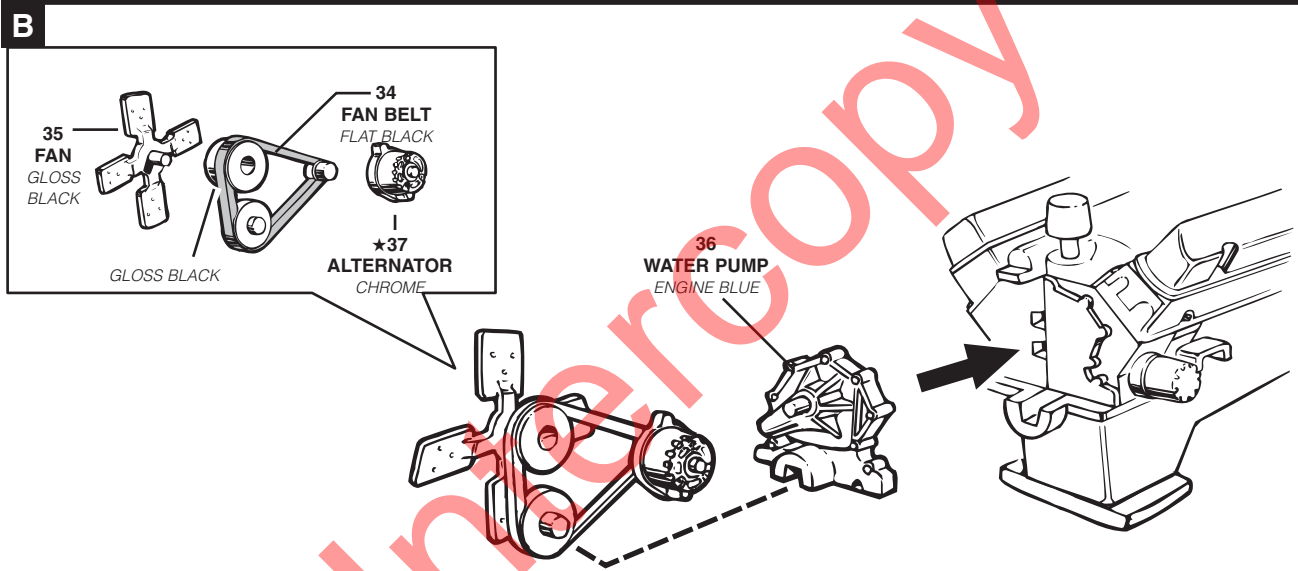
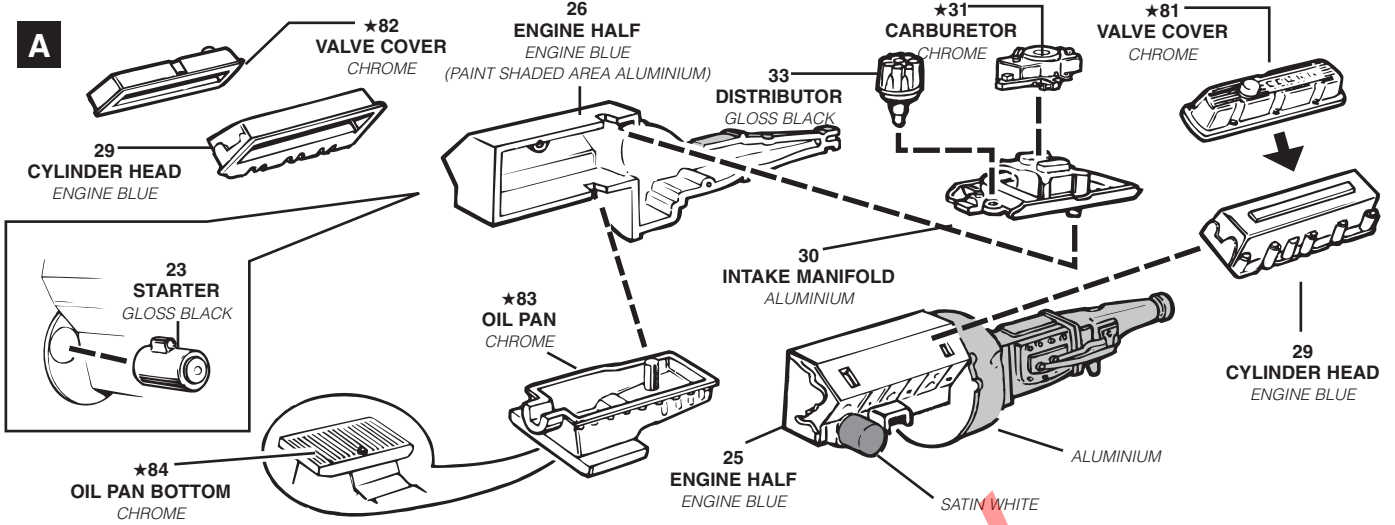


C



3

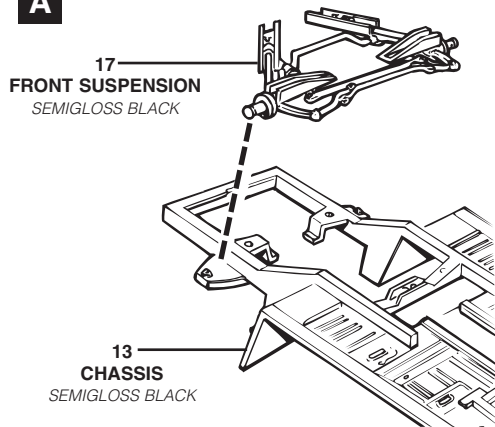
ENGINE ASSEMBLY



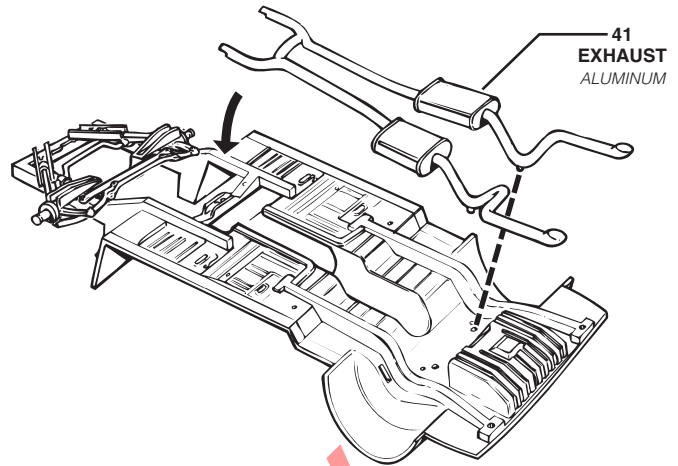
4

SUSPENSION ASSEMBLY

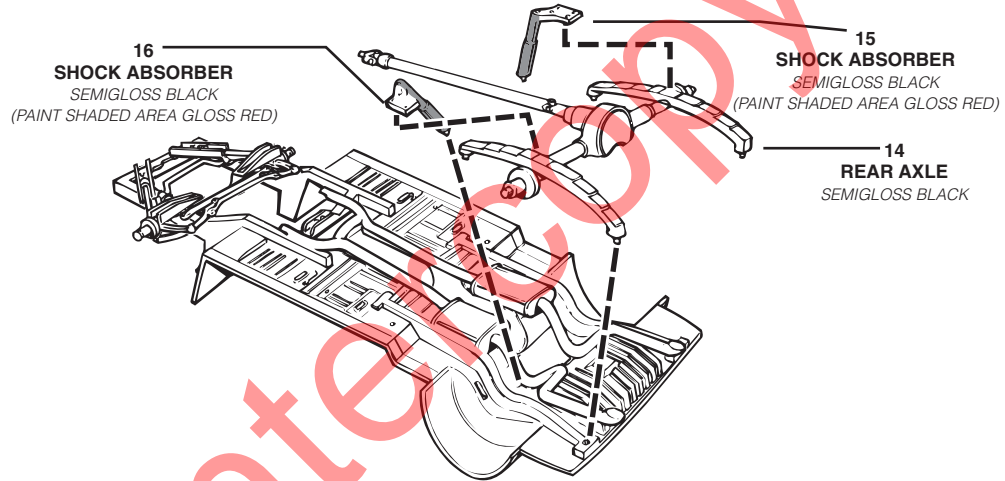
A



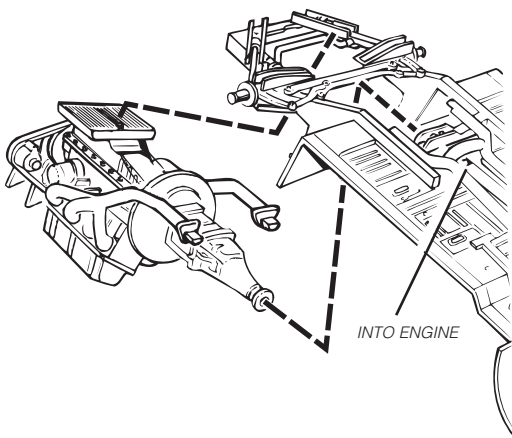
B



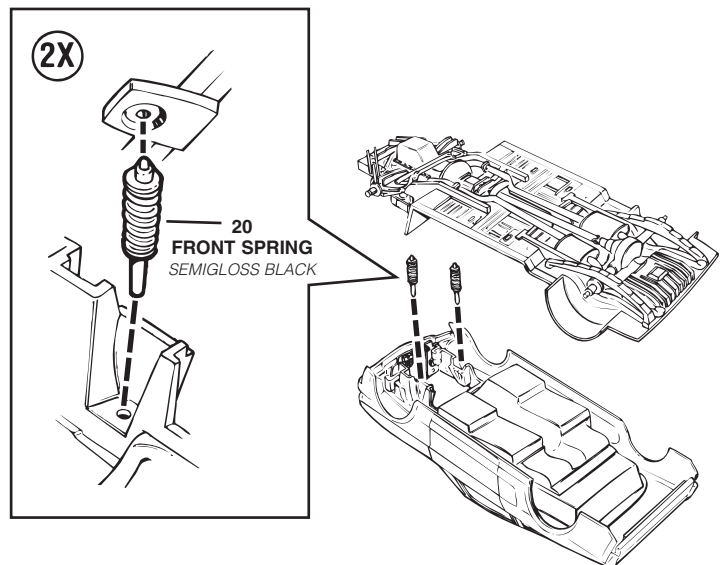
C



D



E

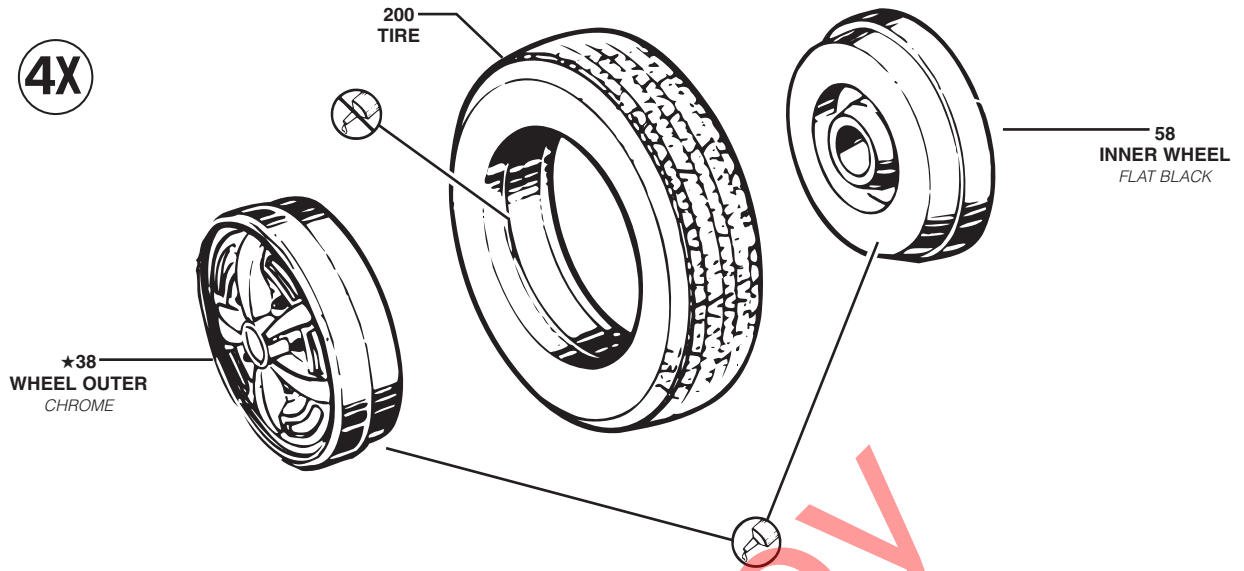


5

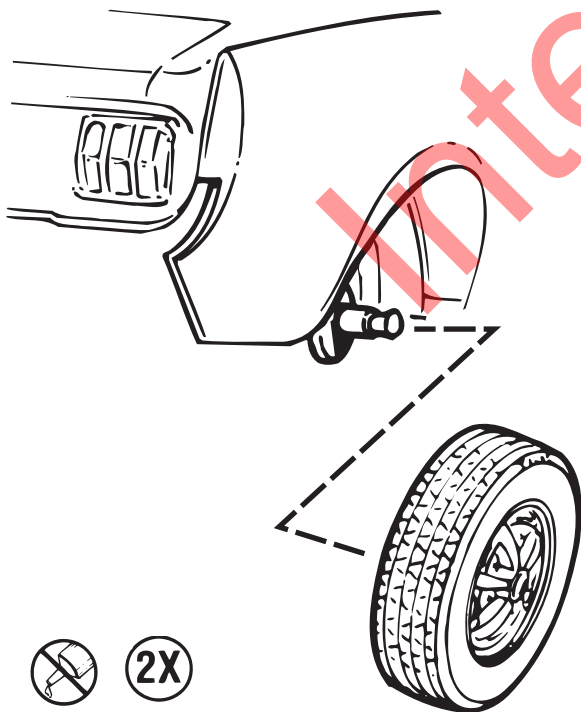
WHEEL AND TIRE ASSEMBLY

A

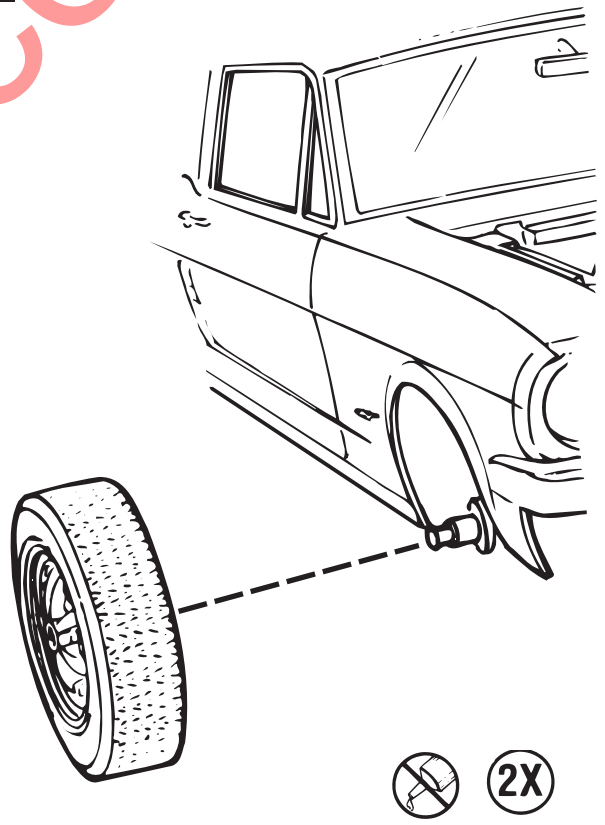
4X



B



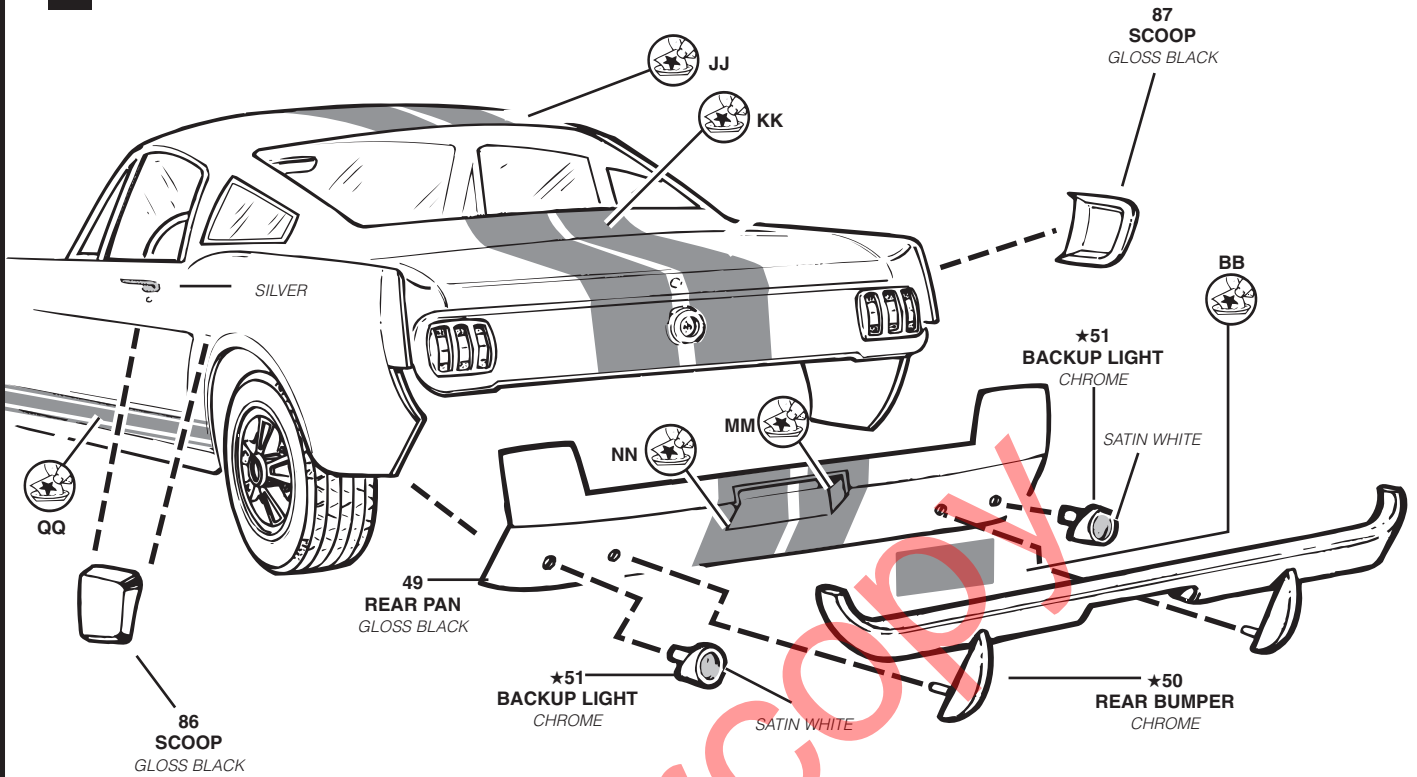
C



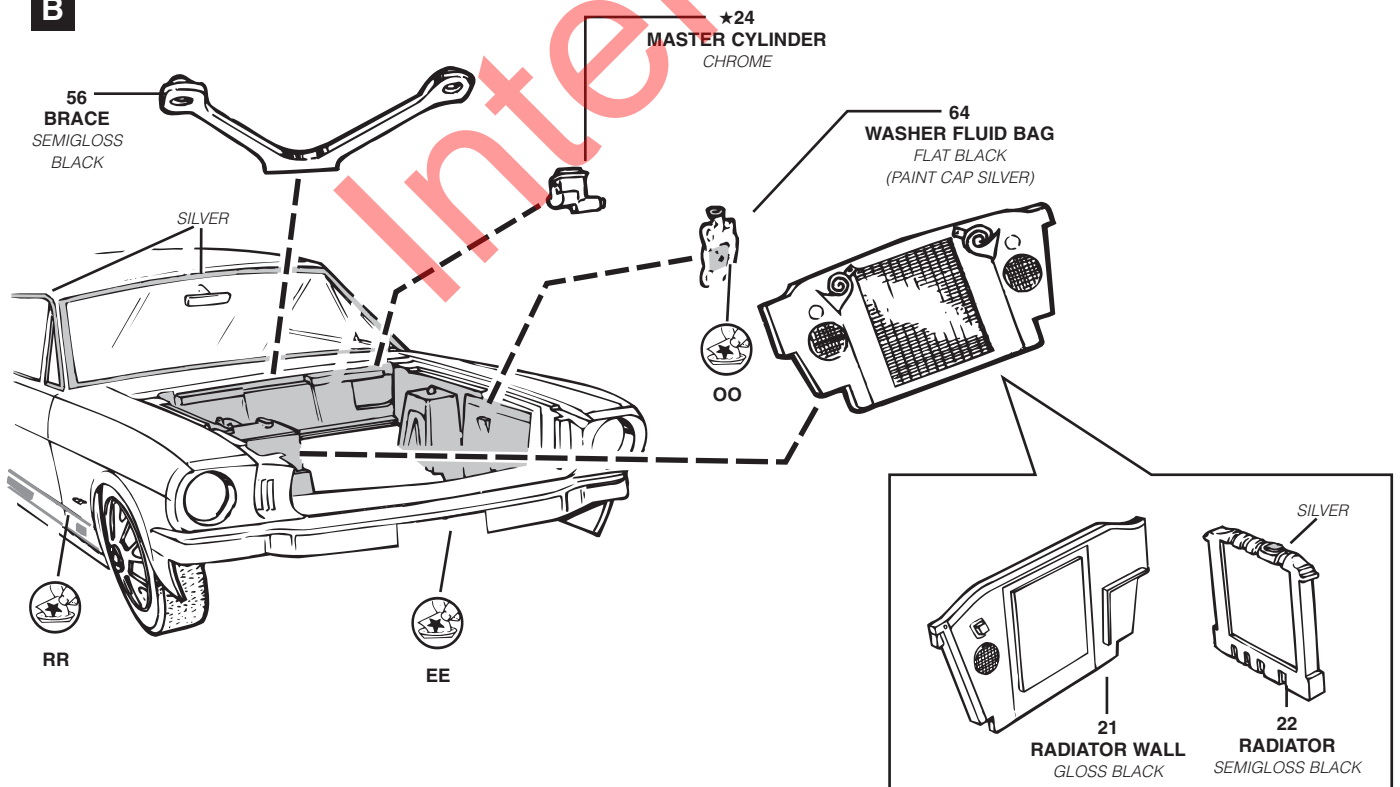
6

FINAL ASSEMBLY

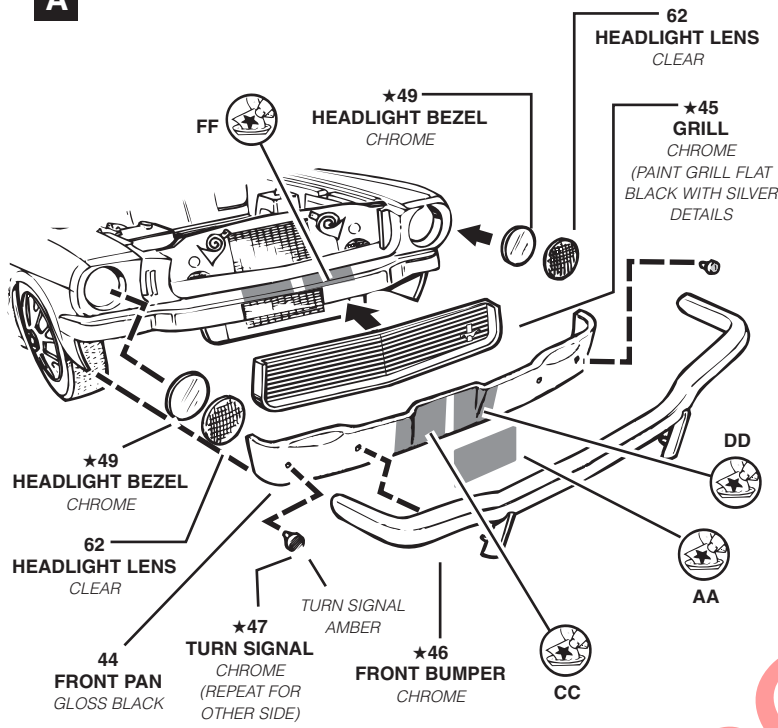
A



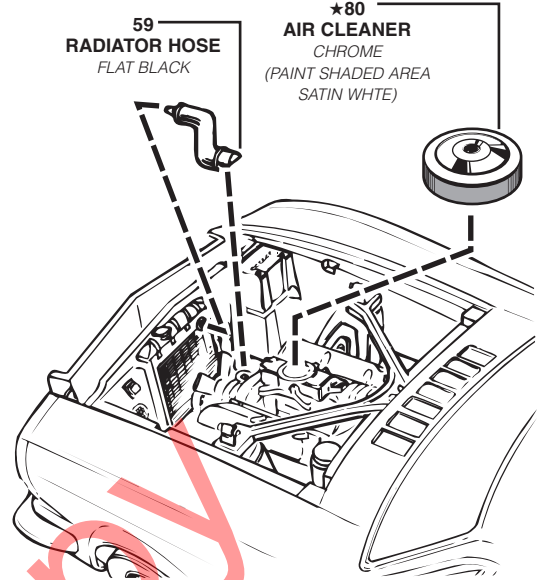
B



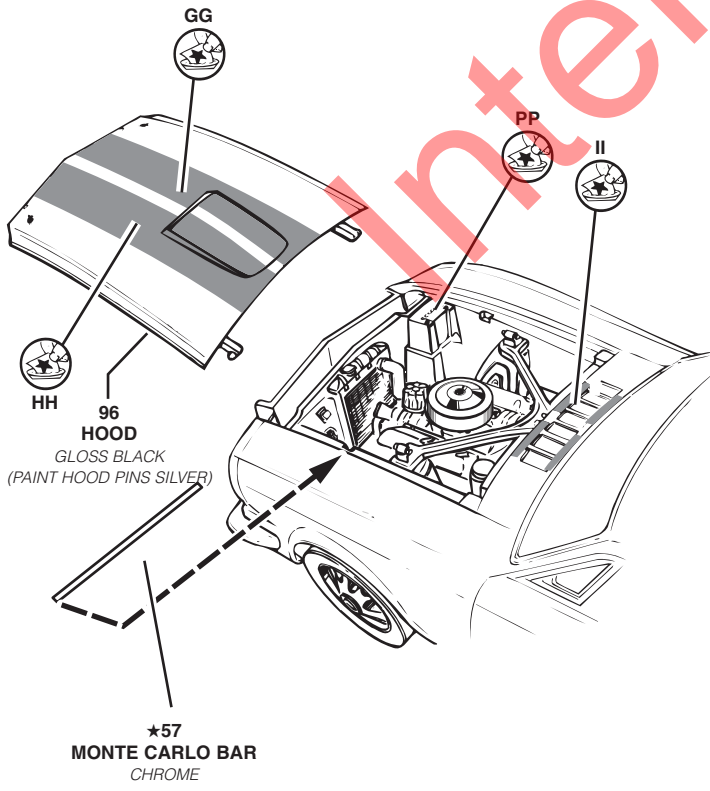
A



B



C



D

