



KIT2381

85238110200

# 71 CUDA

Needing a small, sporty car to compete with the likes of the wildly successful Ford Mustang, Plymouth® added a fastback roofline to their compact Valiant model and named it the Barracuda. While it had Chrysler's® small 273 cubic inch V8 engine, it was really still an economy car and posed no threat to competitor's sales figures.

Subsequent restyling in 1967 made both the Valiant and the Barracuda more attractive but it wasn't until 1970 that the Barracuda really became a player in the then red hot Pony Car wars.

The 1970 'Cuda, as the performance oriented models were now called, and its sister car for the Dodge division, the Challenger, were re-engineered to be longer and wider. This provided both a wider track for better handling and straight line traction and a larger engine compartment. This last feature was especially important as Plymouth had some monster motors it wanted to shove into the car.

The most fabled and feared of the Mopar powerplants was the 426 Hemi. Nicknamed for its hemispherical combustion chambers, the Hemi was expensive, temperamental and difficult to drive if

used as everyday transportation. But it was as close to an actual race engine as one could get without building it yourself.

Because of that, production numbers for all Chrysler models with the Hemi engine option were low compared to the other engine choices available. Typically, the Hemi would be ordered in a car intended for racing. That meant the least expensive two door hard-top or sedan with as few options as possible, all in the pursuit of weight reduction, the key to speed. Convertible models, which were heavier by nature than their steel roofed counterparts, were ordered with the Hemi far less frequently.

With impending regulations from both the government and insurance companies looming, the viability of monster motors like the 426 Hemi was fading. 1971 was the last year Chrysler installed the engine in street vehicles and less than 10 Hemi 'Cuda ragtops were built the entire model year. In fact, the yellow and white example used as the prototype for this Revell kit was the very last car of this body type and engine combination Chrysler would ever build.



**\* REPEAT SEVERAL TIMES**  
*\* A REPETER PLUSIEURS FOIS*



**\* OPTIONAL PARTS**  
*\* PIECES EN OPTION*



**\* DECAL**  
*\* DECAL COMANIE*



**\* ALTERNATIVE ASSEMBLY**  
*\* ENSEMBLAGE ALTERNATIVE*



**\* CEMENT TOGETHER**  
*\* A COLLER*



**\* REMOVE AND THROW AWAY**  
*\* A RETIRER ET JETER*



**\* DO NOT CEMENT**  
*\* NE PAS COLLER*

### READ THIS BEFORE YOU BEGIN

- \* Study the assembly drawings.
- \* Each plastic part is identified by a number.
- \* In the assembly drawings, some parts will be marked by a star (★) to indicate chrome plated plastic.
- \* For better paint and decal adhesion, wash the plastic parts in a mild detergent solution. Rinse and let air dry.
- \* Check the fit of each piece before cementing in place.
- \* Use only cement for polystyrene plastic.
- \* Scrape plating and paint from areas to be cemented.
- \* Allow paint to dry thoroughly before handling parts.
- \* Any unused parts may be discarded.

### DECAL APPLICATION INSTRUCTIONS

1. Cut desired decal from sheet.
2. Dip decal in water for a few seconds.
3. Place wet decal on paper towel.
4. Wait until decal is movable on paper backing.
5. Place decal in position on model, face up and slide backing away.
6. Press out air bubbles with a soft damp cloth.
7. Milkiness that may appear is for better decal adhesion and will dry clear. Wipe away any excess adhesive.
8. Do not touch decal until fully dry.
9. Allow the decals 48 hours to dry before applying clear coat.

**NOTE:** Decals are compatible with setting solutions or solvents.

### LIRE CE QUI SUIT AVANT DE COMMENCER

- \* Etudier les schémas de montage.
- \* Chaque pièce en plastique est identifiée par un numéro.
- \* Sur les schémas de montage, certaines pièces sont marquées d'une étoile (★) pour indiquer qu'elles sont en plastique chromé.
- \* Pour une meilleure prise de la peinture et des autocollants, laver les pièces en plastique avec une solution détergente peu concentrée. Les rincer et les laisser sécher à l'air.
- \* Vérifier que chaque pièce s'ajuste bien avant de la coller en place.
- \* N'utiliser que de la colle pour polystyrène.
- \* Gratter les parties à coller pour enlever le chrome et la peinture.
- \* Laisser la peinture bien sécher avant de manipuler les pièces.
- \* Toute pièce inutilisée peut être jetée.

### DIRECTIVES D'APPLICATION DES AUTOCOLLANTS

1. Découper l'autocollant désiré de la feuille.
2. Tremper l'autocollant dans de l'eau pendant quelques secondes.
3. Placer l'autocollant mouillé sur une serviette en papier.
4. Attendez que l'autocollant puisse être déplacé sur son support en papier.
5. Mettre l'autocollant en position sur le modèle face sur le dessus et faire glisser le support pour l'enlever.
6. Appuyer avec un chiffon doux humide pour éliminer les bulles d'air.
7. La substance laiteuse qui peut apparaître est destinée à améliorer l'adhésion de l'autocollant et devient incolore au séchage. Essuyer pour enlever tout excédent d'adhésif.
8. Ne pas toucher l'autocollant tant qu'il n'est pas bien sec.
9. Laisser l'autocollant sécher pendant 48 heures avant d'appliquer une couche transparente.

**REMARQUE:** Les autocollants sont compatibles avec les solutions de fixation ou les solvants.

**This optional paint guide is provided if you choose to detail paint your model.**

*Ce guide de peinture vous sera fourni si vous choisissez de peindre votre modèle en détail.*

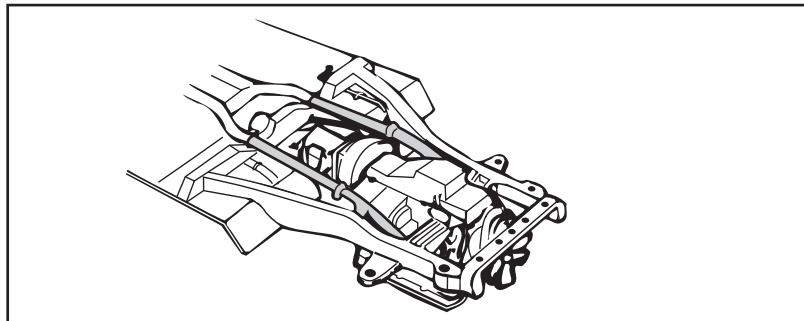
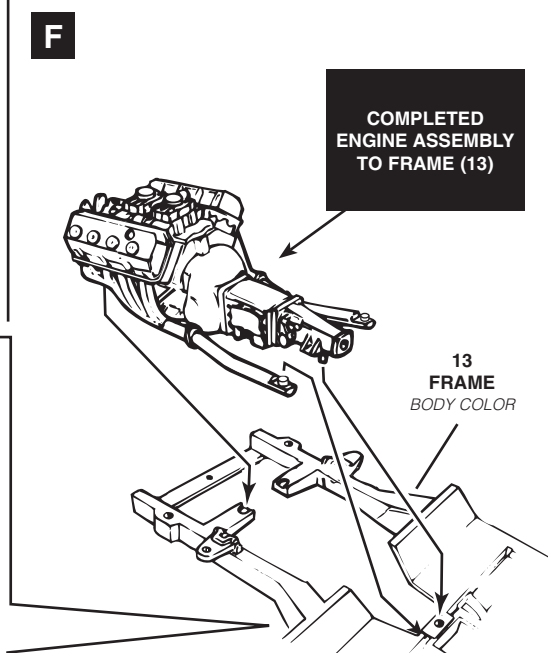
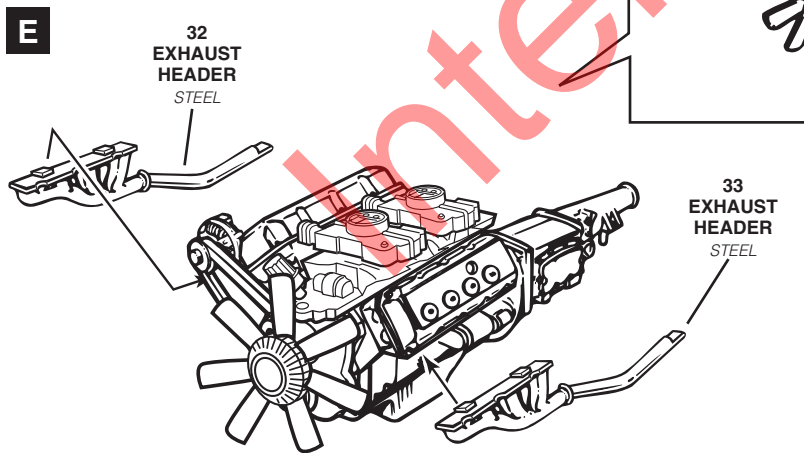
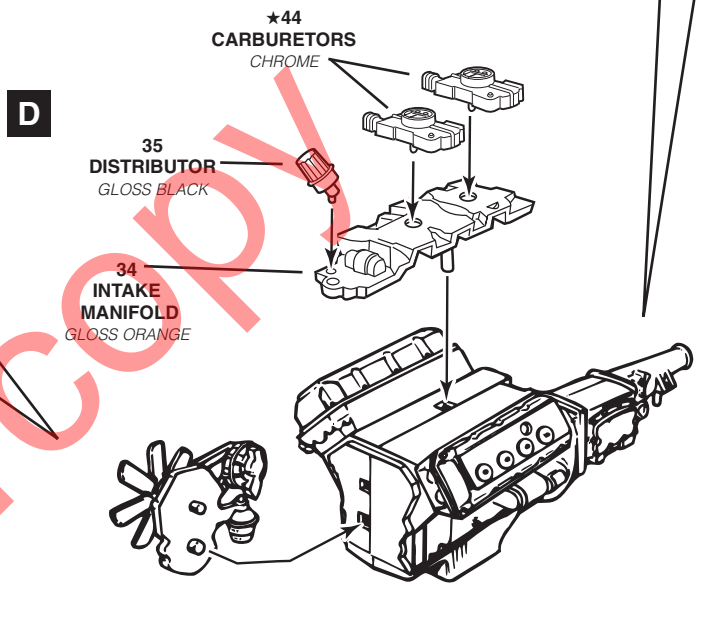
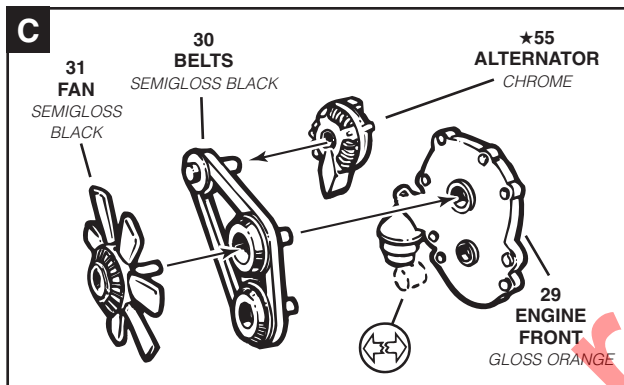
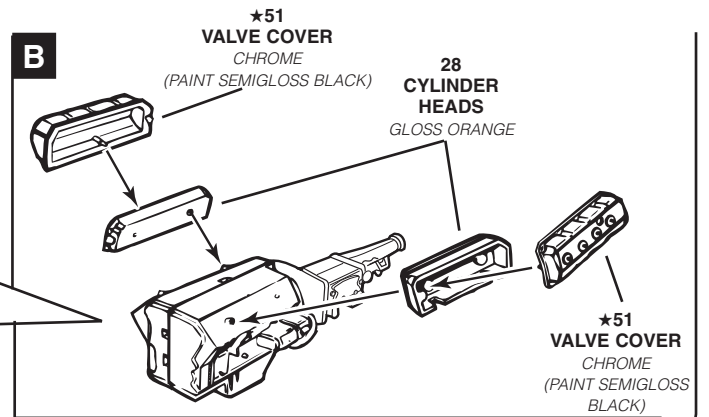
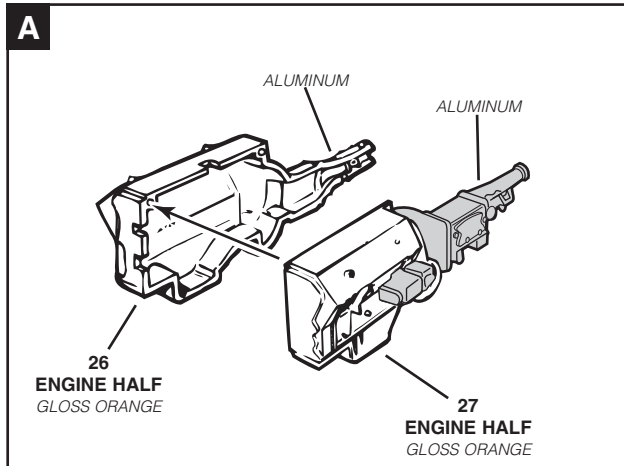
<b>Aluminum</b>	<i>Aluminum</i>
<b>Gloss Black</b>	<i>Noir lustré</i>
<b>Gloss Green</b>	<i>Vert lustré</i>
<b>Gloss Orange</b>	<i>Orange lustré</i>
<b>Gloss Red</b>	<i>Rouge lustré</i>
<b>Gloss Yellow</b>	<i>Jaune lustré</i>
<b>Semigloss Black</b>	<i>Noir satiné</i>
<b>Satin White</b>	<i>Blanc satiné</i>
<b>Silver</b>	<i>Argent</i>
<b>Steel</b>	<i>Acier</i>
<b>Transparent Red</b>	<i>Rouge transparent</i>

If you have any questions or comments, call our hotline at: **(800) 833-3570** or, please write to:

**Revell-Monogram Consumer Service Department, 725 Landwehr, Northbrook, Illinois 60062**

*Be sure to include the plan number (85238110200), part number, description, your return address and phone number.*

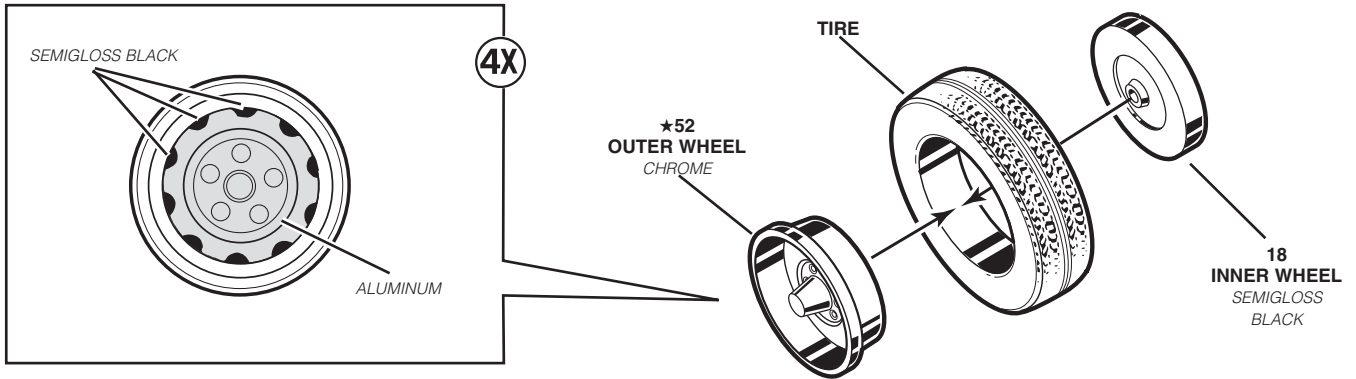
Visit our website: [www.revell-monogram.com](http://www.revell-monogram.com)



EXHAUST HEADERS CONNECT TO PIPES UNDER FRAME

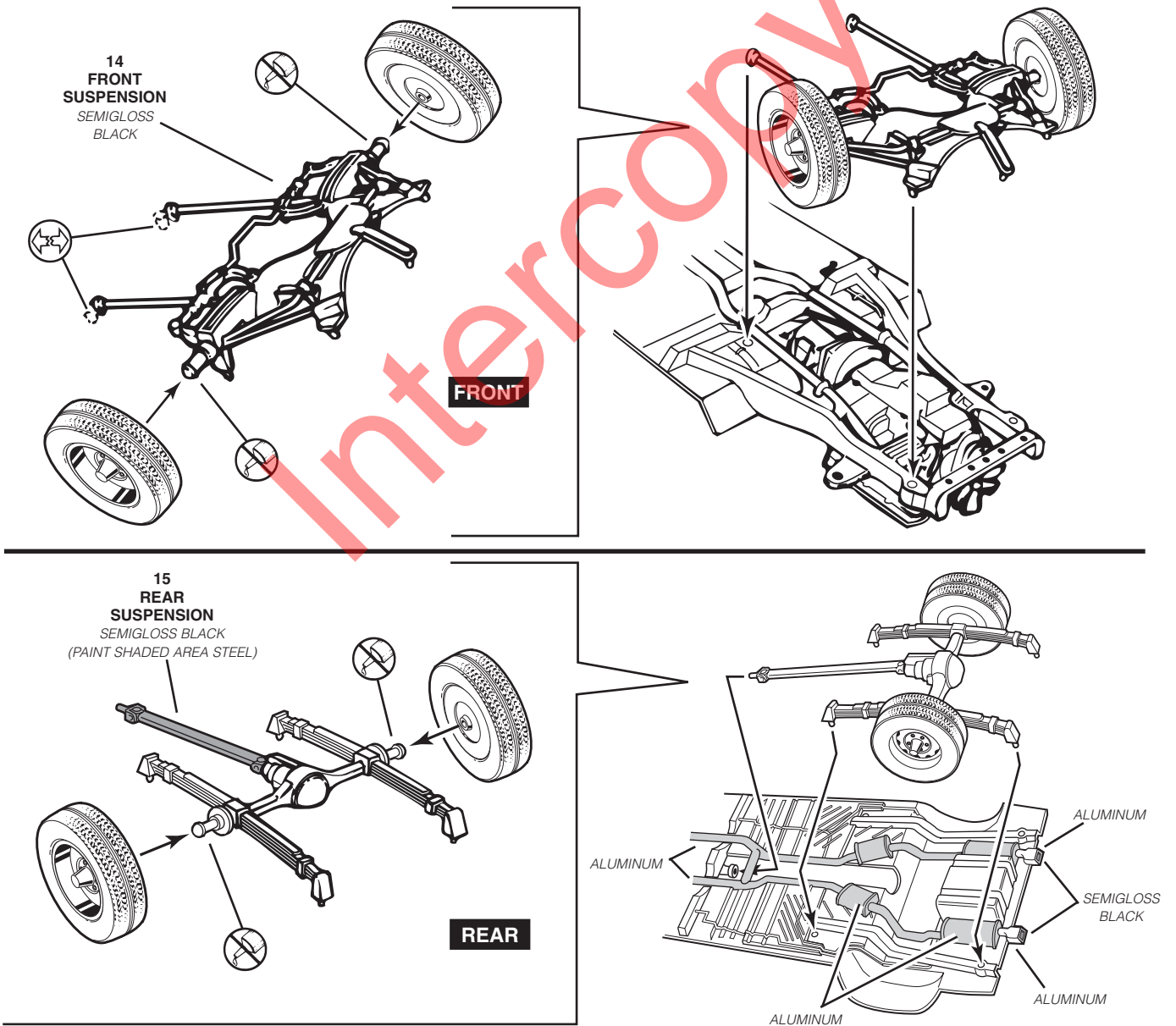
# 2

# WHEEL ASSEMBLY



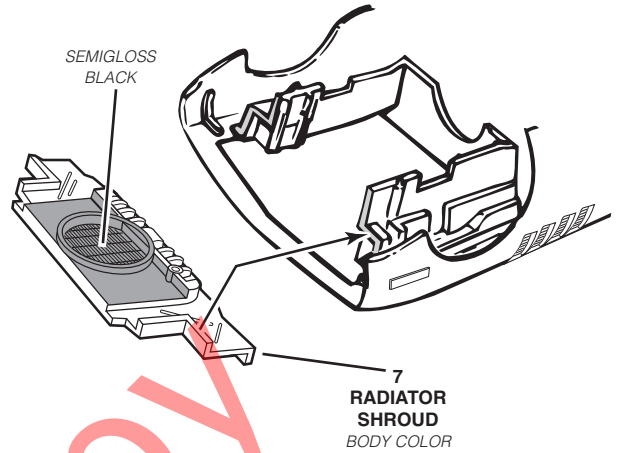
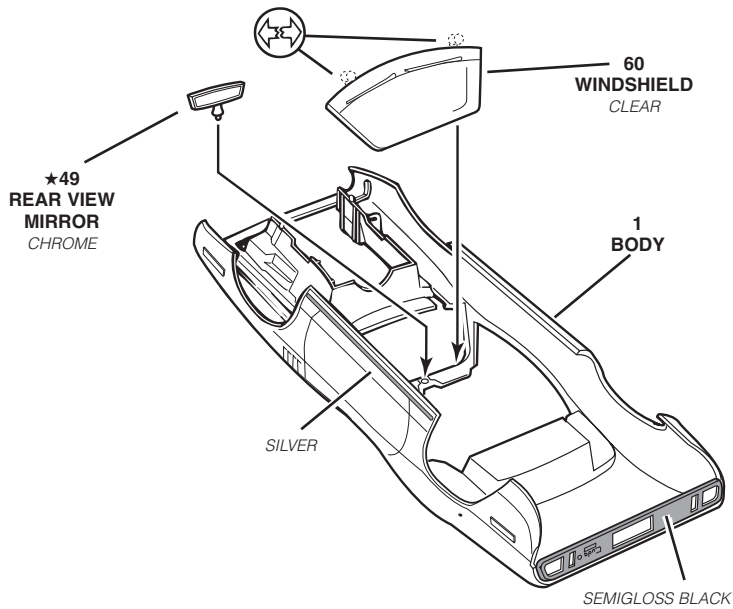
# 3

# SUSPENSION ASSEMBLY



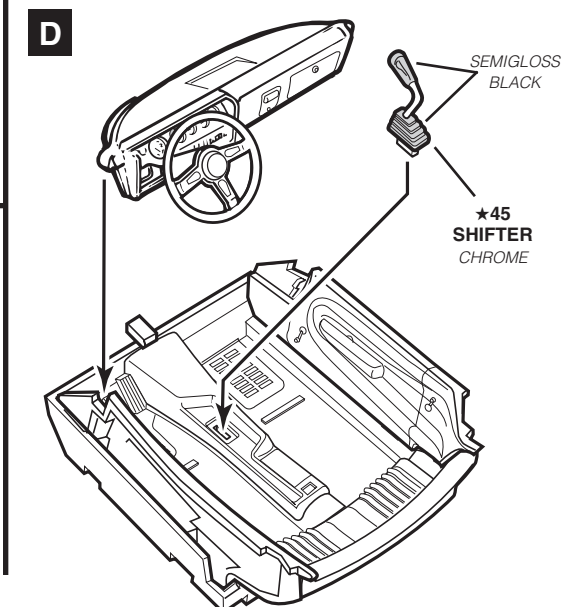
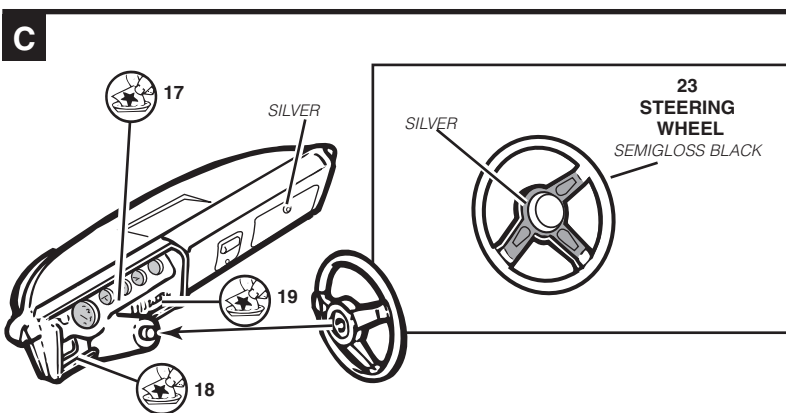
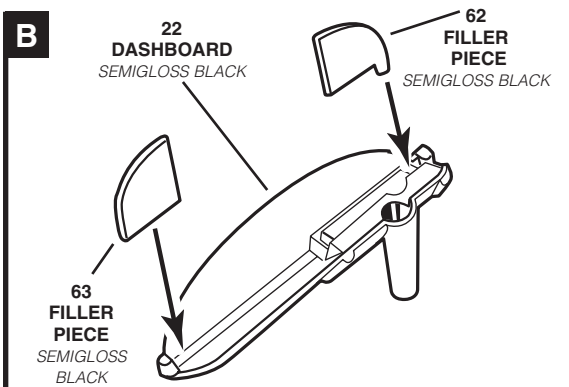
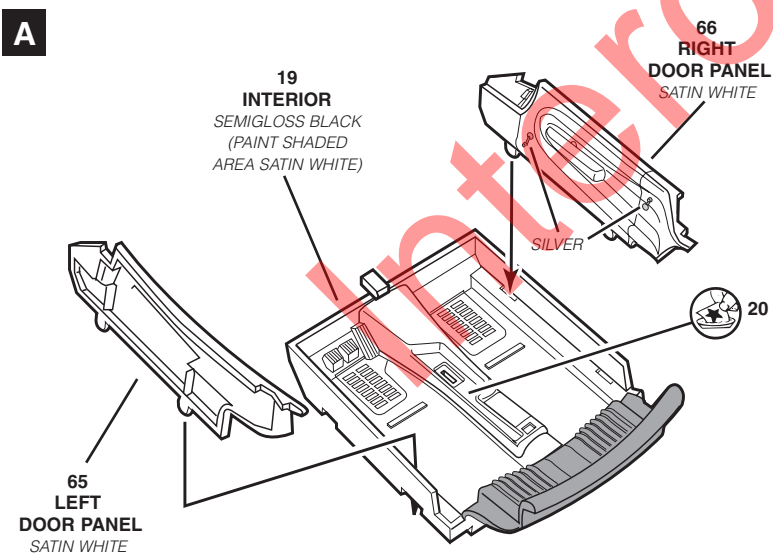
# 4

# WINDSHIELD AND RADIATOR ASSEMBLY



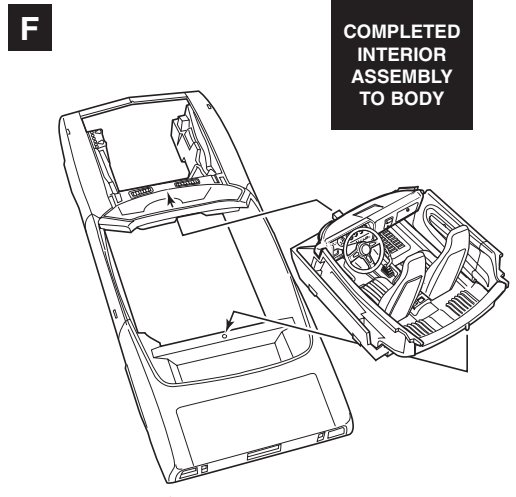
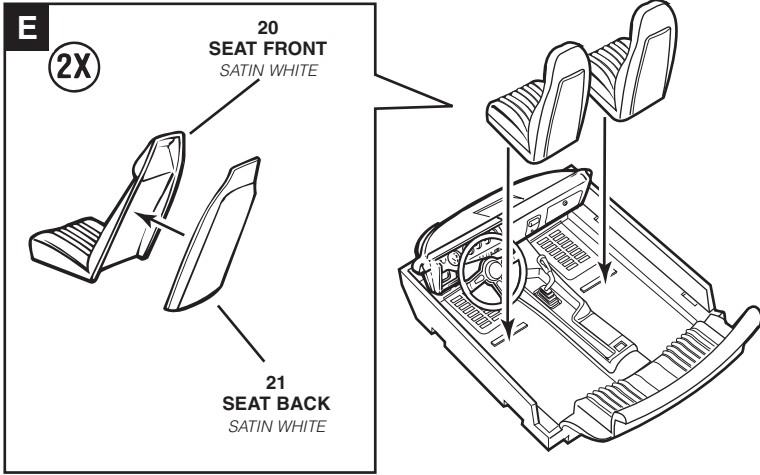
# 5

# INTERIOR ASSEMBLY



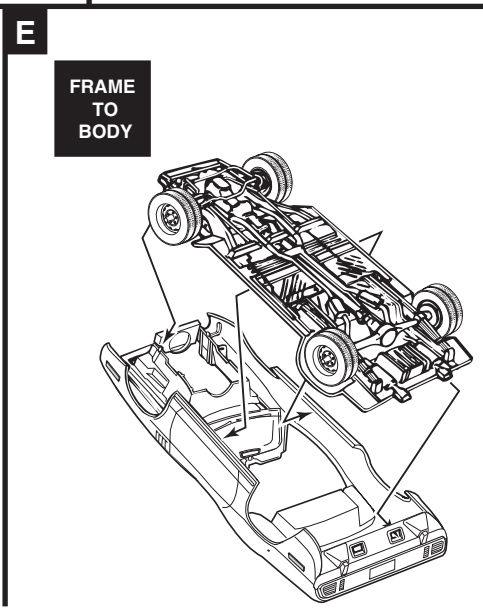
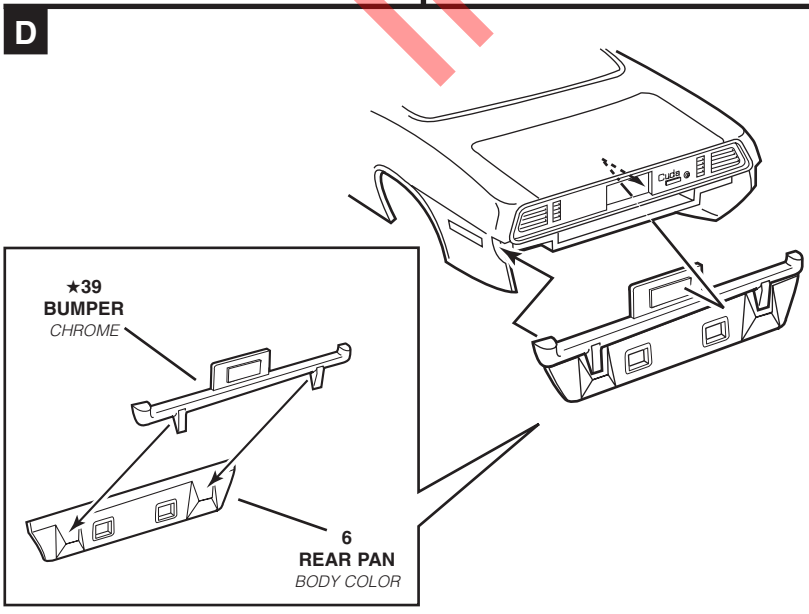
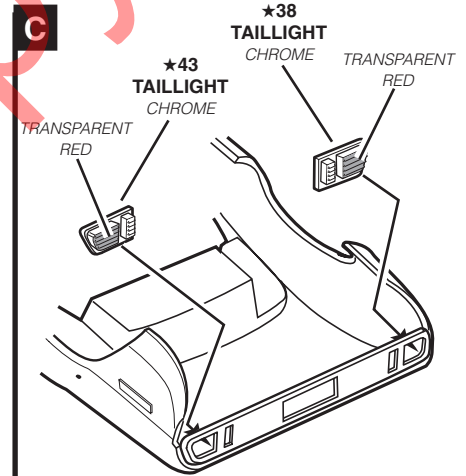
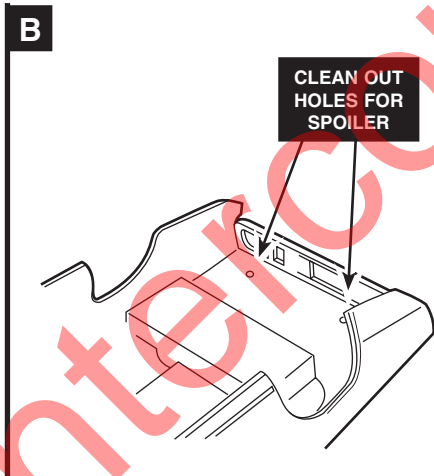
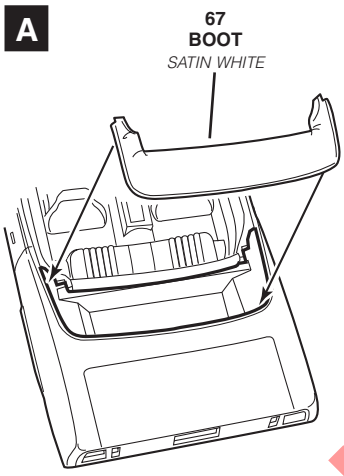
# 5

## INTERIOR ASSEMBLY CONTINUED



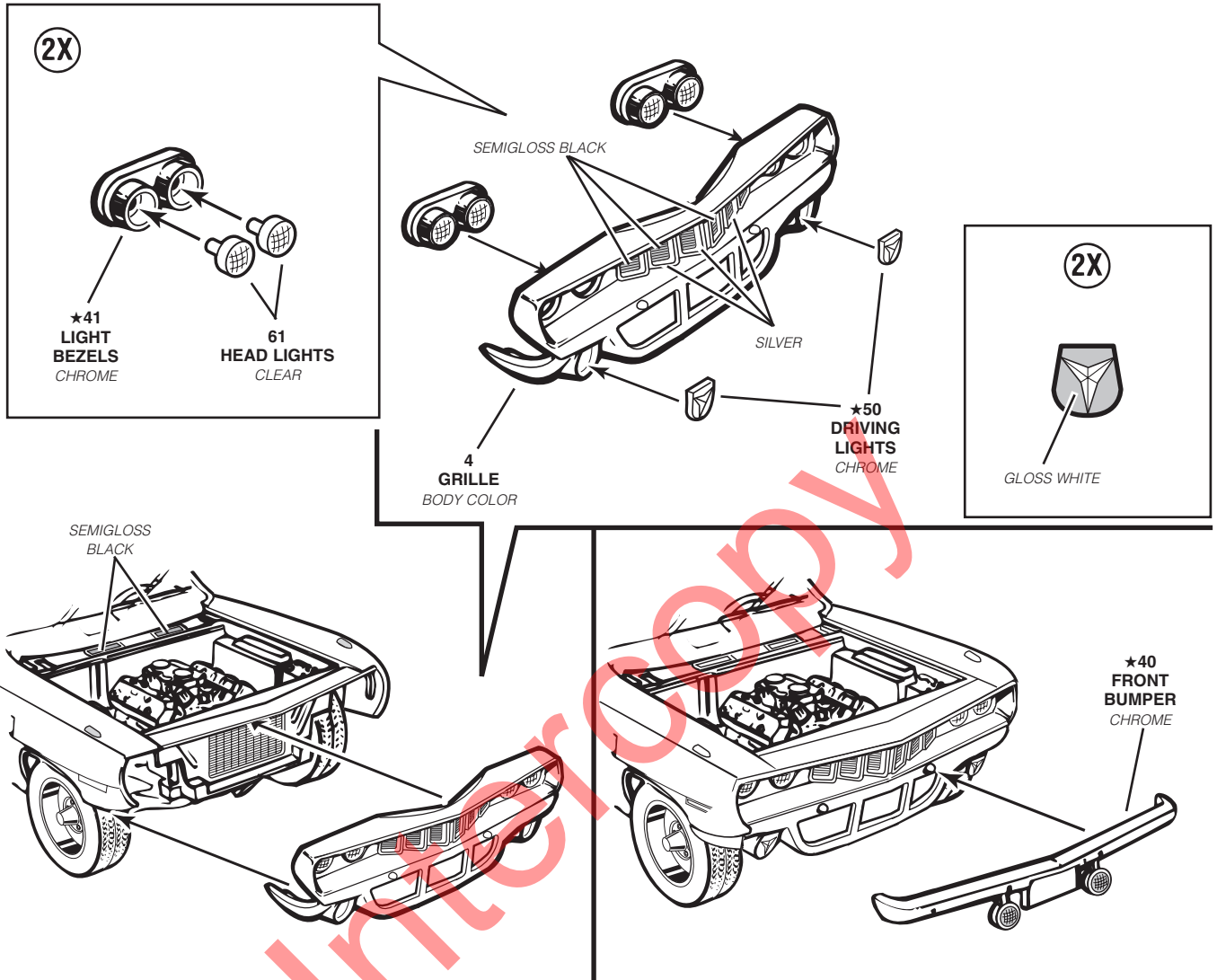
# 6

## FRAME ASSEMBLY



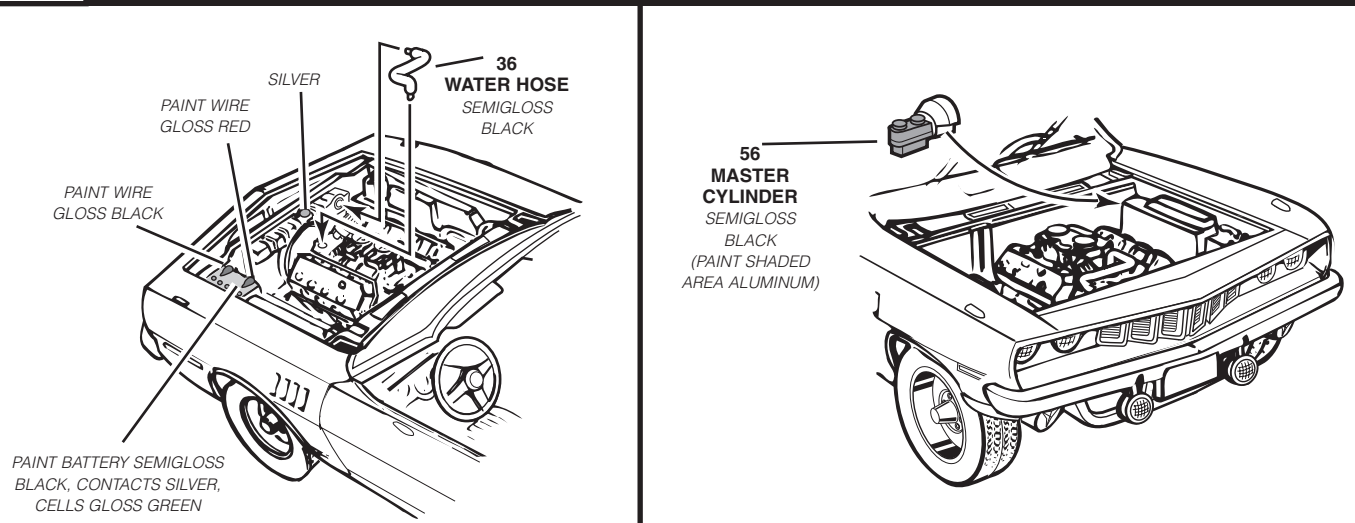
# 7

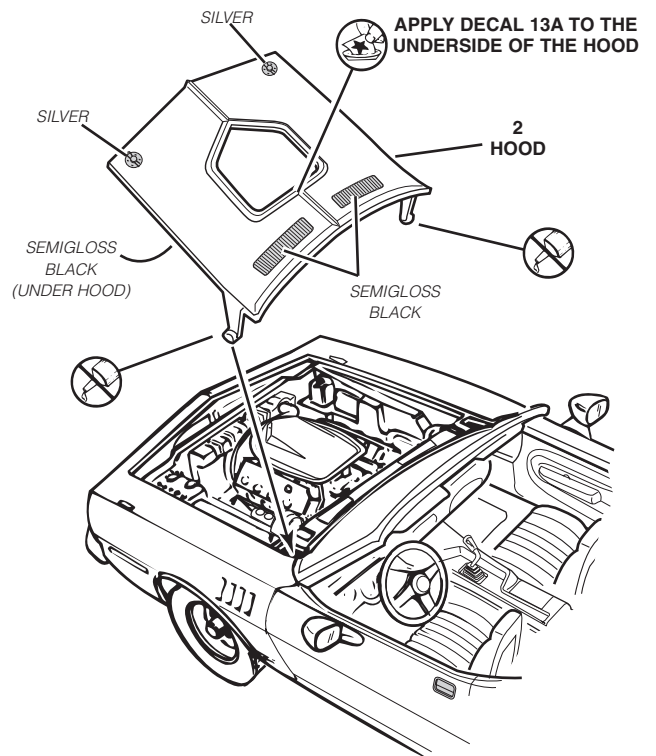
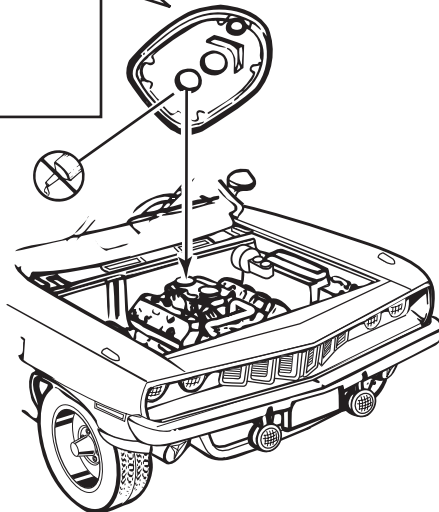
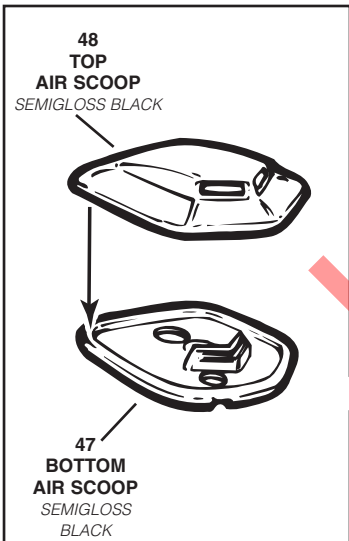
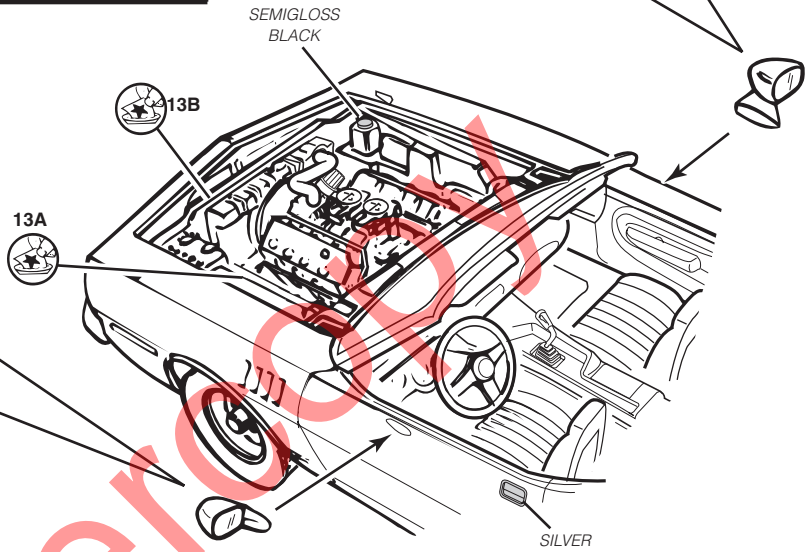
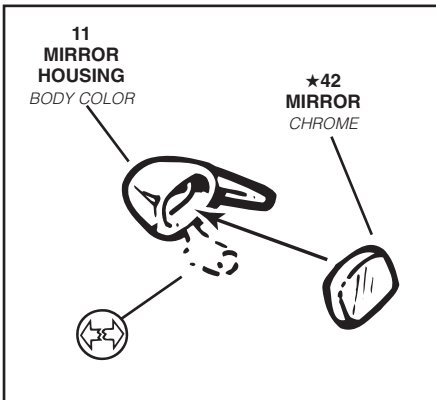
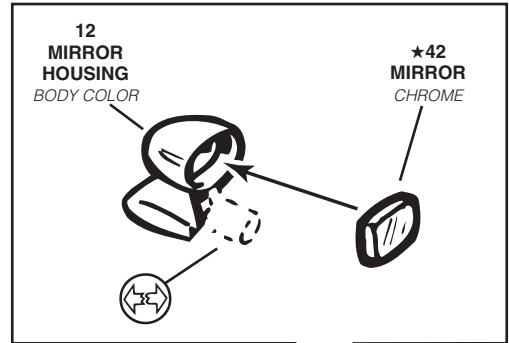
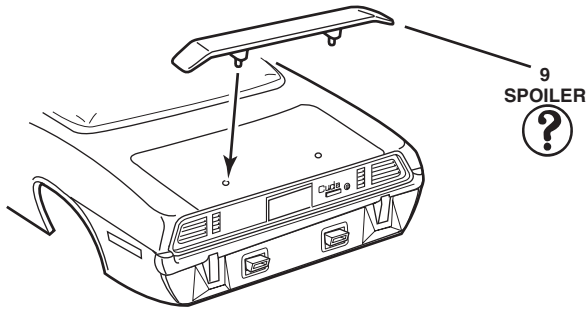
# FRONT ASSEMBLY



# 8

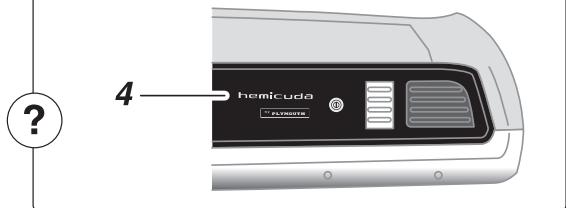
# ENGINE COMPARTMENT ASSEMBLY



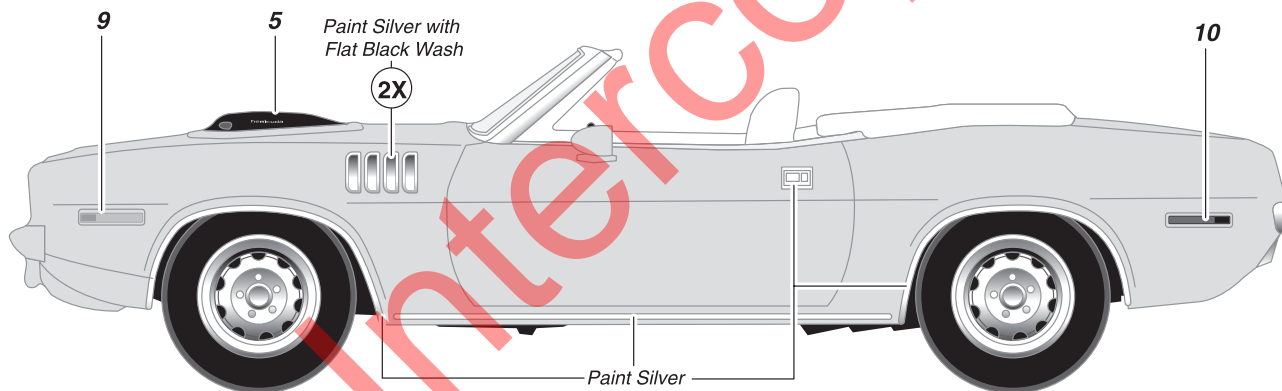
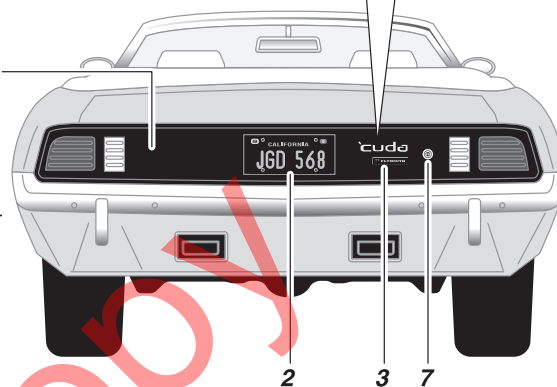




When Using decal # 2, "Cuda" Engraving Must Be Removed.



Paint Silver  
Paint Flat Black  
Paint Body Color



21  
(Repeat for other side using #22)

